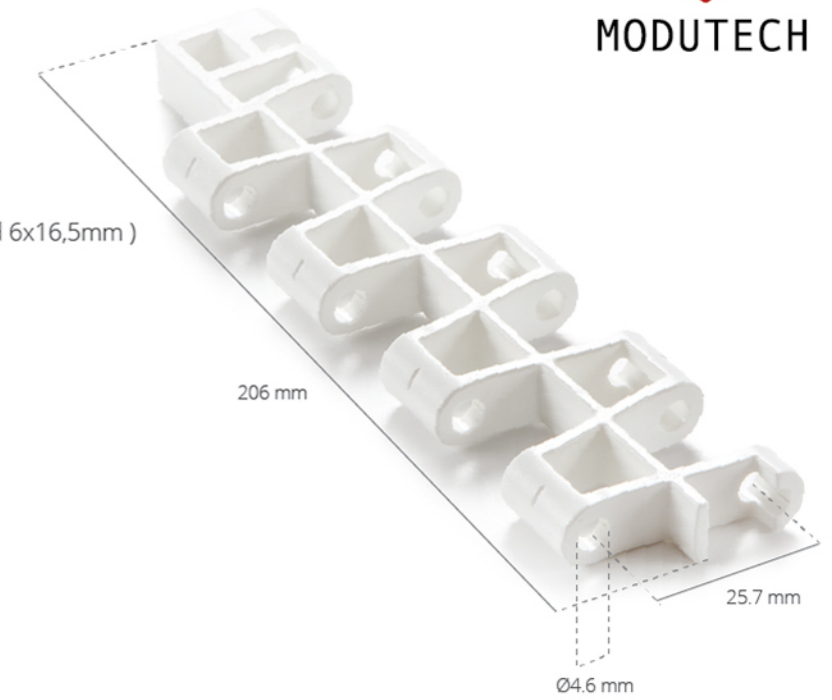


MD254 GAP%48

Pitch:	25.7 mm
Belt Surface:	Open smooth surface
Minimum Width:	203 mm
Open Area (%):	%48. (Biggest opening 9x13,5mm and 6x16,5mm)
Flight:	No
Side Wall:	No
Rod:	Ø4.9 mm
Approved:	FDA and EU
Curve:	No
Color:	Additional colors available
Cleanability:	Excellent
Belt Width:	11 mm



Product Features and Functional Benefits

- Belt provides optimal open area for drainage and airflow.
- Less friction and product contact for easy cooking, cooling and freezing of products.
- Reduced dirt and oxide build due to self cleaning surface.
- Stainless steel pins option for high temperature applications.
- Easy to clean reduces downtime for cleaning time %70.
- Stainless steel pins option reduce belt elongation for high temperature application.

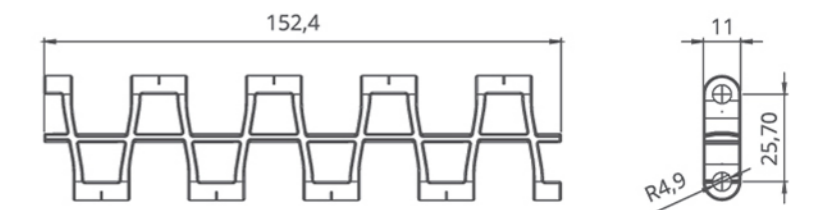
MD254 GAP%48 / Technical Information

BELT MATERIAL	BELT STRENGTH				TEMPERATURE		BELT WEIGHT Kg/m ²
	Straight		Curve		C(min.)	C(max.)	
	Kg/m	N/m	Kg/m	N/m			
Polypropylene	840	8400	-	-	+5	+90	5.00
Polyethylene	-	-	-	-	-	-	-
Acetal	1400	14000	-	-	-43	+110	6.80

- Belt strength and temperature values are maximum on the table.

MD254 GAP%48 / Standard Belt Widths

BELT SERIES	WIDTH (W)				Belt Width Tolerance (max.)
	PP-PE		POM		
	(mm)	(inch)	(mm)	(inch)	
MD254GAP48	203,2	8	203,2	8	± 0,5 mm
MD254GAP48	237	9	237	9	± 1 mm
MD254GAP48	270,8	11	270,8	11	± 1 mm
MD254GAP48	304,6	12	304,6	12	± 1 mm
MD254GAP48	338,4	13	338,4	13	± 2 mm
MD254GAP48	372,2	15	372,2	15	± 2 mm
MD254GAP48	406	16	406	16	± 2 mm
MD254GAP48	439,8	17	439,8	17	± 2 mm
MD254GAP48	473,6	19	473,6	19	± 2 mm
MD254GAP48	507,4	20	507,4	20	± 2 mm
MD254GAP48	541,2	21	541,2	21	± 2 mm
MD254GAP48	575	23	575	23	± 2 mm
MD254GAP48	608,8	24	608,8	24	± 3 mm
MD254GAP48	642,6	25	642,6	25	± 3 mm



- Bigger sizes are available with 33.8 mm increments.
- Please contact with customer service for precise belt measurements.

MD254 GAP%48

Modular Belt Series

• Bakery Applications

Including Oven Infeed - Outfeed, Coating Lines, Glazing Lines, Freezing Lines, Conditioning Lines

• Poultry Applications

Cooling and Freezing Lines

• Seafood Applications

Including Breeding Machines, Draining Lines

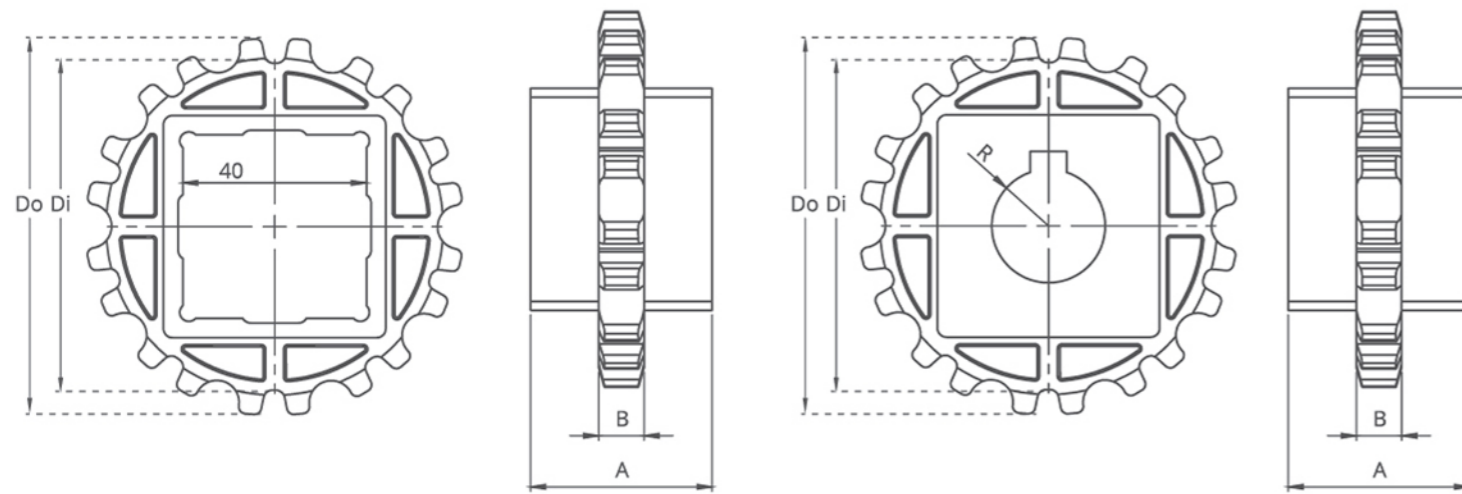
• Snack Food Applications

Including Proofer Lines, Boiler Infeed, Oven Infeed - Outfeed, Cooling Lines

• Fruits and Vegetables Applications

Including Prewashing / Rinsing, Draining

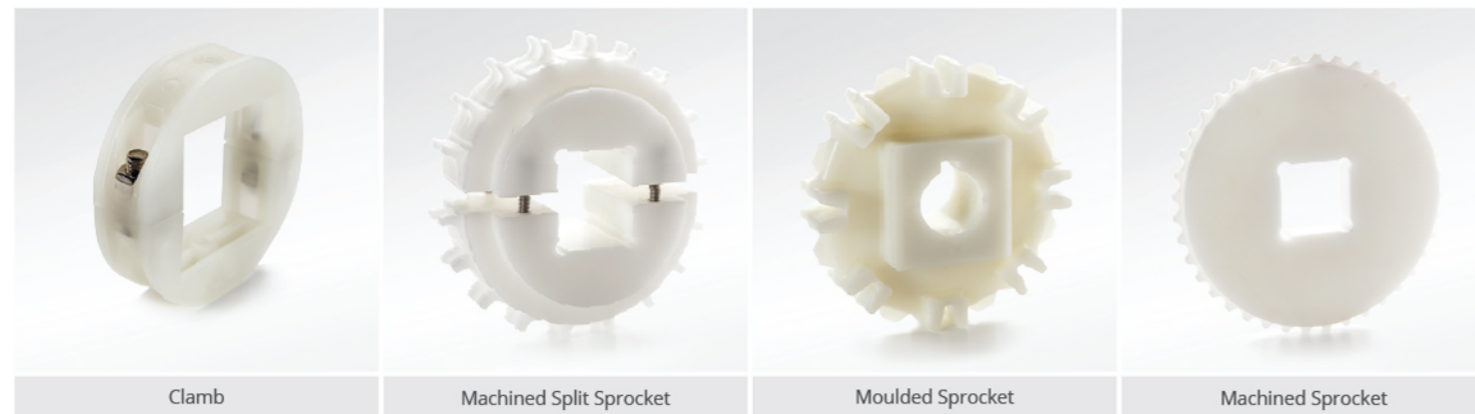
EC254 Series Sprockets and Technical Specifications



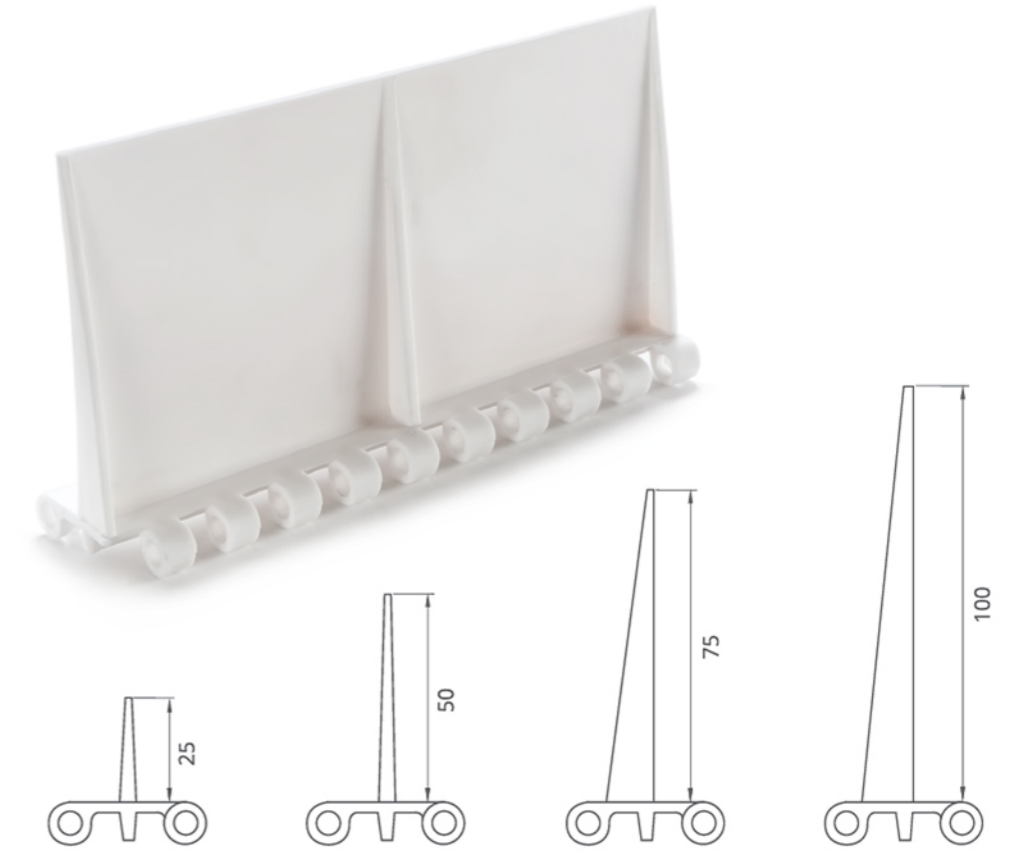
EC254 Series / Standard Sprockets Dimensions

NO. TEETH	Di	Do	B	A	Square Bore (Q)	Round Bore (R)	PRODUCT CODE	
							Square Type (Q)	Round Type (R)
Z10	72.0 mm	83.0 mm	10.0 mm	40.0 mm	40.0 mm	25.0 / 30.0	EC254SQZ10*PA	EC254SRZ10*PA
Z15	112.0 mm	123.0 mm	10.0 mm	40.0 mm	40.0 mm	25.0 / 30.0	EC254SQZ15*PA	EC254SRZ15*PA
Z18	137.0 mm	147.5 mm	10.0 mm	40.0 mm	40.0 mm	25.0 / 30.0	EC254SQZ18*PA	EC254SRZ18*PA

*Other sprockets and hub sizes are manufactured up to request.
 *POM (Acetal) and PP (Polypropylene) sprockets raw material is available on request.



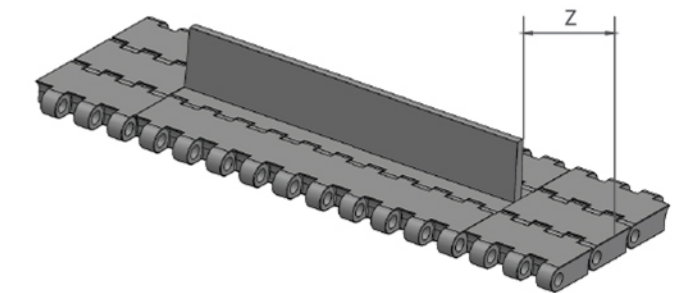
EC254 Series Accessories and Technical Specifications



EC254 Series / Flight Technical Specifications

Possible Flight Indets for 25,4 mm Series	Z	
	(mm)	(inch)
Standart, no module cutting	15	0,59
Standart, no module cutting	30	1,18
Standart, no module cutting	45	1,77
Standart, no module cutting	60	2,36
Standart, no module cutting	75	2,95

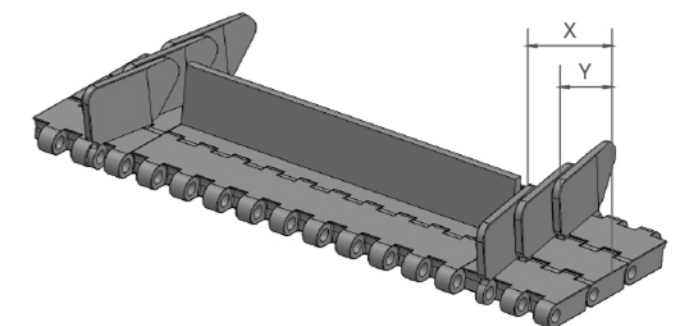
*Non-standard flight indent is on request.

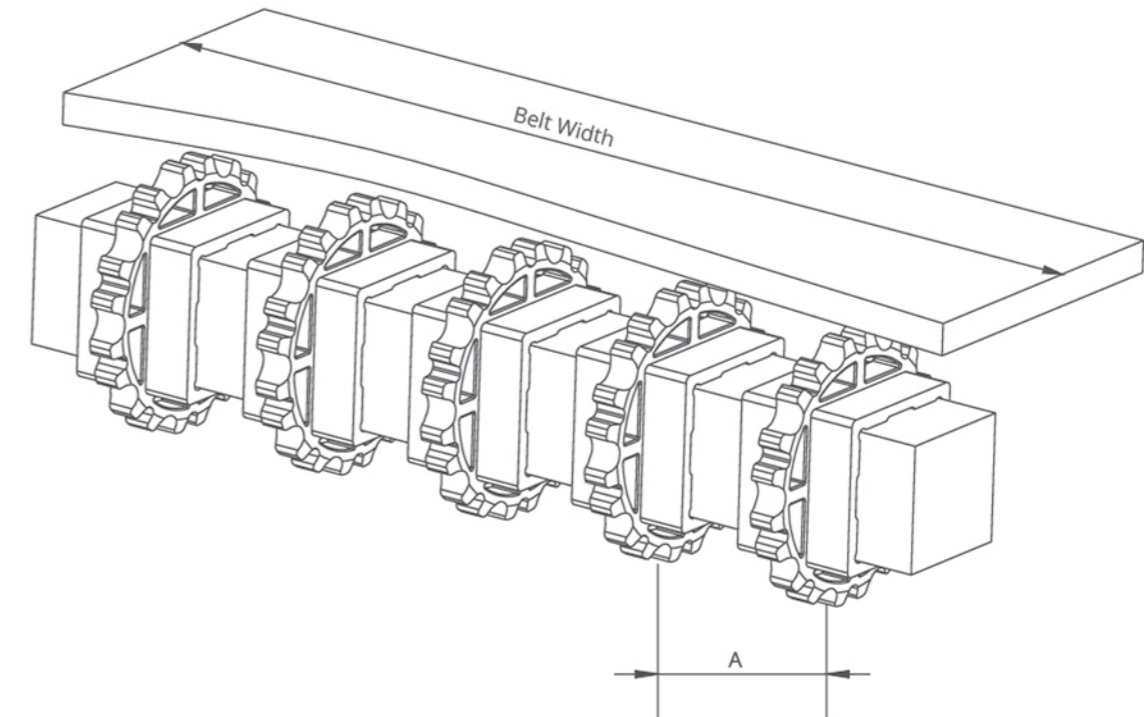
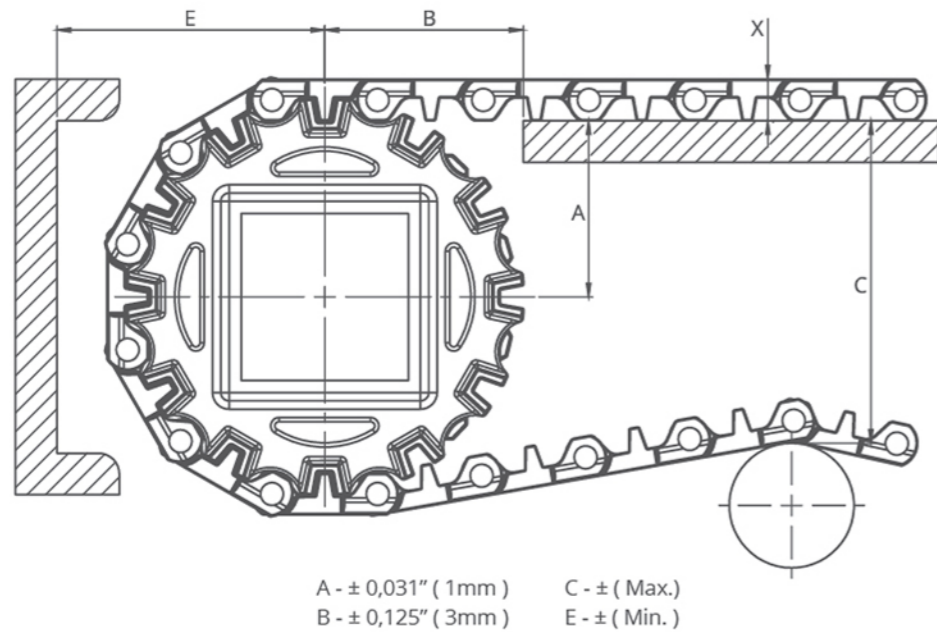


EC254 Series / Sidewall Technical Specifications

Possible Sidewall and Flight Indets	X		Y	
	(mm)	(inch)	(mm)	(inch)
Standart, no module cutting	24	0,94	15	0,59
Module cutting necessary	32	1,26	22	0,87
Standart, no module cutting	40	1,57	30	1,18
Module cutting necessary	48	1,89	37	1,46
Standart, no module cutting	56	2,20	45	1,77
Module cutting necessary	64	2,52	53	2,09

Note: Gap between flight and sidewall minimum 2-3 mm
 Gap between flight and sidewall maximum 10 mm





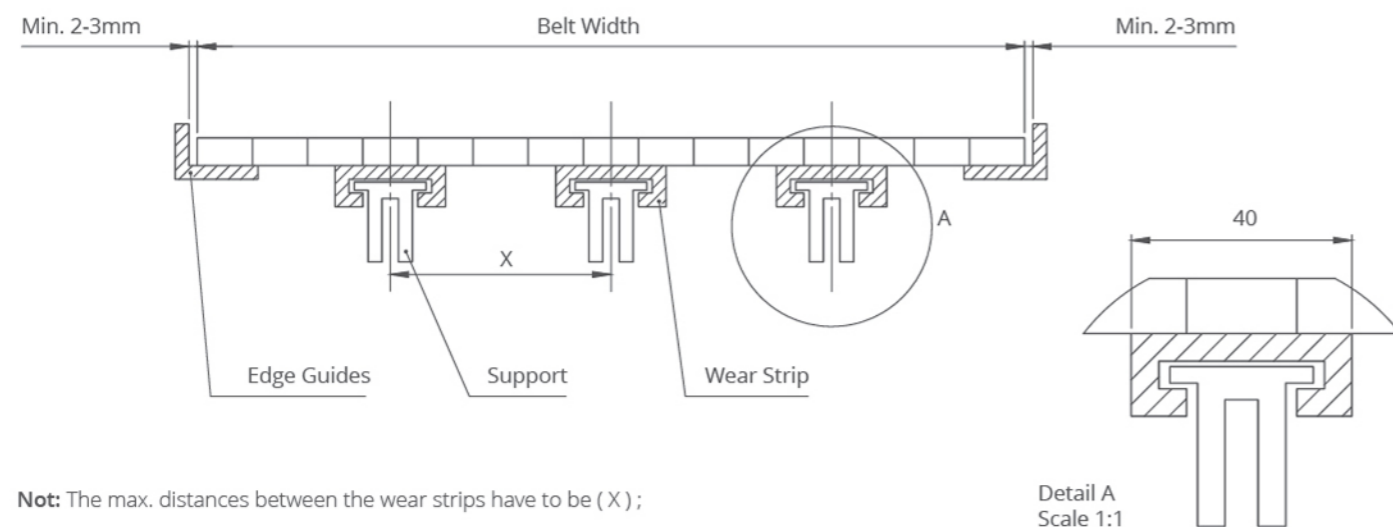
EC254 Series / Conveyor Frame Dimensions

Sprockets Description			A		B		C		E		X	
Pitch Diameter		No.Teeth	Range (Bottom to Top)		In.	mm	In.	mm	In.	mm	In.	mm
In.	mm		In.	mm								
EC254 C, EC254 PR%24												
2,95	75	10	1,34	34	1,77	45	2,44	62	2,22	56,5	0,39	10
3,54	90	12	1,67	42,5	1,89	48	3,05	77,5	2,54	64,5	0,39	10
4,57	116	15	2,16	54,75	2,17	55	3,62	92	3,07	78	0,39	10
5,53	140,5	18	2,64	67	2,38	60,5	4,65	118	3,48	88,5	0,39	10

EC254 Series / Sprockets Arrangement

Standard Belt Width		Number of sprockets per shaft		A (mm/inch)	
mm	inch	Drive Shaft	Return Shaft	Min.	Max.
152,4	6	2	2	60/2,36	170/6,6
228,6	9	2	2	60/2,36	170/6,6
304,8	12	3	2	60/2,36	170/6,6
381	15	4	3	60/2,36	170/6,6
457,2	18	5	3	60/2,36	170/6,6
533,4	21	5	3	60/2,36	170/6,6
609,6	24	6	3	60/2,36	170/6,6
685,8	27	6	4	60/2,36	170/6,6
762	30	7	4	60/2,36	170/6,6
838,2	33	7	4	60/2,36	170/6,6
914,4	36	8	4	60/2,36	170/6,6
990,6	39	8	5	60/2,36	170/6,6
1066,8	42	9	5	60/2,36	170/6,6
1143	45	9	5	60/2,36	170/6,6
1219,2	48	10	5	60/2,36	170/6,6
1295,4	51	10	6	60/2,36	170/6,6
1371,6	54	11	7	60/2,36	170/6,6
1447,8	57	11	7	60/2,36	170/6,6
1524	60	12	7	60/2,36	170/6,6
1600,2	63	12	8	60/2,36	170/6,6
1676,4	66	12	8	60/2,36	170/6,6
1752,6	69	13	8	60/2,36	170/6,6
1828,8	72	14	9	60/2,36	170/6,6
1905	75	14	9	60/2,36	170/6,6
1981,2	78	15	10	60/2,36	170/6,6
2057,4	81	15	10	60/2,36	170/6,6

EC254 Series / Slider Support System For Straight Running Belts



Not: The max. distances between the wear strips have to be (X);

125 mm for 2" belts
80 mm for 1" / 0.5" belts

Note: Number of sprockets depends on the belt load.